

kentucky WOODLANDS

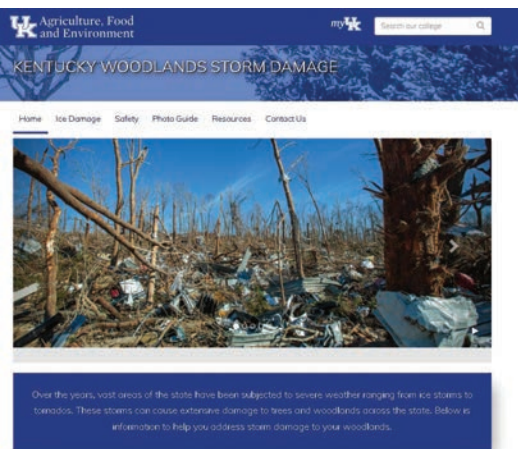
Storm Damaged Woodland Resources

Weather events such as tornadoes and ice storms are major weather events that can have significant impacts on Kentucky woodlands

and their owners. Following storms it is important to take extreme caution when entering any wooded areas with storm-related hazards such as downed power lines and trees, storm debris, and widow-makers (loose branches and hung-up stems high in the canopy). To help woodland owners and natural resource professionals safely deal with storm damaged woodlands the UK Forestry and Natural Resources Extension team has developed a woodland storm damage website

located at <http://kytimberdamage.ca.uky.edu>. The site has links to publications on safety in the woods, timber salvage decisions, and managing your woodlands following severe storm damage. We will continue to develop materials related to our response to storm damaged woodlands in Kentucky and post them to that site. The Kentucky Woodland Owners Association also has also compiled content on tornado support resources located at <https://www.kwoa.net/tornado-support-resources.html>.

For additional questions about woodland damage, please reach out to our silviculture specialist, Dr. Jacob Muller at Jacob.Muller@uky.edu



Welcome to Jon Shultz— Kentucky's New Natural Resources Conservation Service State Forester

Jon is from Ferndale, California, and was raised on the family cattle ranch in the heart of the Redwood Region. He attended college at Humboldt State University studying Forestry and Rangeland Management and started his career with the local resource conservation district before transitioning to the Natural Resources Conservation Service. After 12 years with NRCS in California he took the opportunity to come to Kentucky as the NRCS State Forester. Because Kentucky is a largely forested and privately owned state, he intends to work with the talented NRCS staff and the private landowners they serve, as well as invaluable partners, on forestland conservation issues. His immediate goal is to expand the scale and scope of forestland conservation, all the while keeping sound planning in the forefront of everything NRCS does. You can reach Jon at 859.224.7370 or Jon.Shultz@usda.gov.



Upcoming Dates To Remember:

Dates:	Event:	Location:	Contact:
July 12, 2022	Adaptation Planning and Practices for Kentucky Forests: Preparing for Climate Change Virtual Event	Zoom meeting via the Web	www.Forestadaptation.org/KY-APP
July-August 2022	Kentucky Woodland Owners Short Course	Zoom meeting via the Web & Pennyriple State Forest, and Berea College Forest	https://wosc.ca.uky.edu/
July - December 2022	From the Woods Today (each Wednesday)	Zoom meeting via the Web	FromtheWoodsToday.com
October 4, 2022	KY Tree Farmer of the Year Field Day	Lewis County	859.257.7597
November 5, 2022	Kentucky Maple School	Breathitt County	https://ky-maplesyrup.ca.uky.edu/ky-maple-school

NEWS TO USE

2022 Kentucky Woodland Owners Short Course

Do you want to learn how you can make your woodland healthier and more productive? Are you interested in attracting more wildlife to your property? Are you considering selling

Kentucky Woodland Owners Short Course



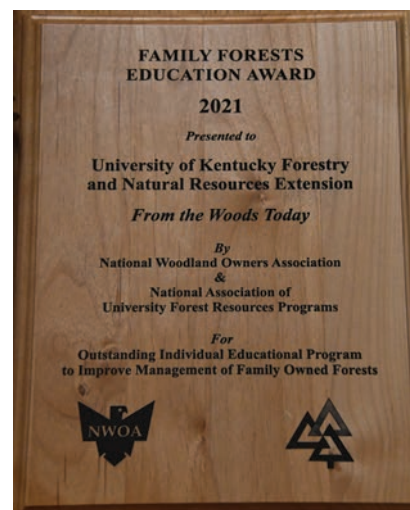
your timber? The 2022 Kentucky Woodland Owners Short Course (WOSC) can help you achieve your goals for your woodland! The live on-line sessions feature forestry and

wildlife experts and the in-person field tours provide an opportunity to see practices while also connecting you with organizations and agencies who can assist in caring for your woodland. Registered 2022 WOSC attendees will have access to all online sessions (live and recordings) and an optional choice of one field tour at either Pennyryle State Forest or Berea College Forest—

the Pennyryle tour will be a guided self-driving tour with fairly short walking distances at each location while the Berea tour will be a walking tour covering approximately 2.5+ miles over the course of the day. The on-line sessions are on July 19, 21, 26, and 28; the Pennyryle State Forest woodland and wildlife tour takes place on August 6 and the Berea College Forest tour is on August 13. For more information and to register for the 2022 WOSC please visit <https://wosc.ca.uky.edu/2022WOSC>.

From the Woods Today Wins National Award

Each Wednesday at 11 AM Eastern Time the UK Forestry and Natural Resources Extension team offers an online program called "From the Woods Today". This program recently won the national Family Forests Education Project Award which was focused on educational programming responses to the COVID pandemic. The award is co-sponsored by the National Woodland Owners Association and the National Association of University Forest Resources Programs. The weekly program offers relevant and timely information about woodlands, wildlife and various related topics impacting Kentucky's woodlands, their owners, and those who depend on them. The show can be accessed via the social conferencing platform Zoom and on Facebook Live with recordings posted on YouTube. Reneé Williams and Billy Thomas, information specialist and extension forester, respectively, welcome UK specialists and partner organizations to share their vast knowledge of Kentucky's forests and the wildlife that calls them home. Make sure to tune in to From the Woods Today by visiting <http://www.FromTheWoodsToday.com>.



Kentucky House Joint Resolution 41 Passes!!!



The 2022 Kentucky legislative session may end up being a BIG one for Kentucky woodland owners. Initially conceived by Dr. Jim Corum, Kentucky Woodland Owners Association Director at Large, House Joint Resolution 41 was 20+ years in the making. The resolution directs the Department of Revenue and the University of Kentucky's Department of Forestry and Natural Resources to recommend equitable property tax assessment procedures for well-managed forests. The resolution was introduced to the legislature by Representative Adam Bowling, District 87 (Bell and Harlan counties).