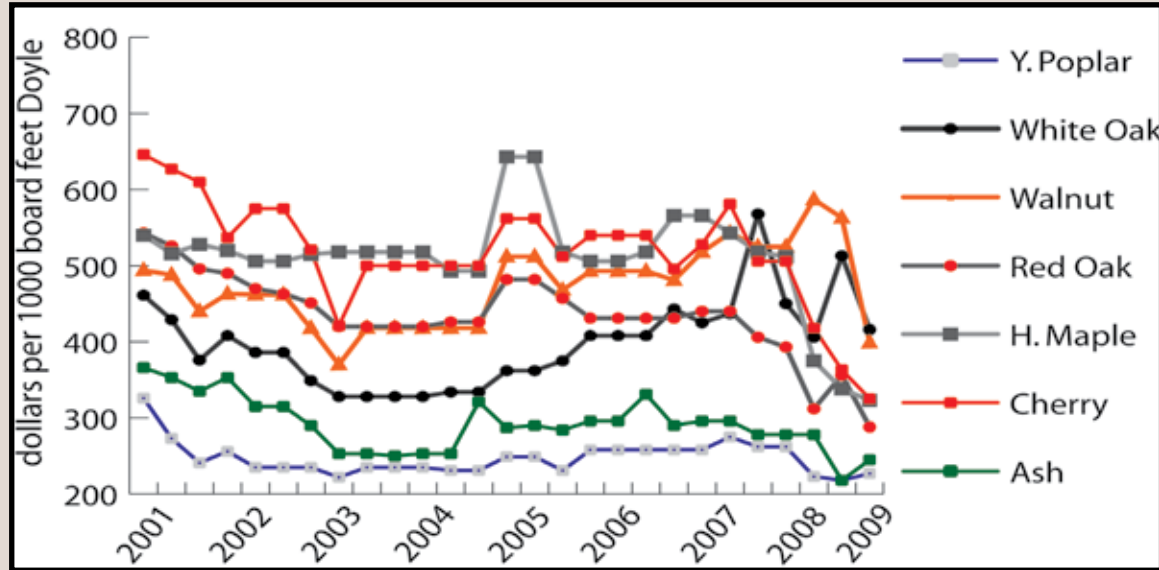


Kentucky Delivered Log Prices

Statewide Average – 2001 to 1st Quarter 2009

Prices reported are averages for medium quality (grade 2) logs delivered to sawmills across Kentucky through the first quarter of 2009*. Values are dollars per thousand board feet (Doyle scale). Stumpage values (the value of the logs in the tree) are typically one-half to one-third of log values.



*Data collected by Chris Nevins, Kentucky Division of Forestry Timber Harvest Compliance and Forest Resource Utilization Section and summarized by Jeff Stringer, University of Kentucky Department of Forestry Extension. In-depth log price reporting can be found in "Growing Gold" by the Kentucky Division of Forestry at www.forestry.ky.gov.