

# kentucky WOODLANDS

## Stay Connected Through E-mail



Join the UK Forestry Extension e-mail list by visiting [www.ukforestry.org](http://www.ukforestry.org) or by scanning the code with your smartphone or tablet device. Check out our archived e-newsletters, at [www.ukforestry.org](http://www.ukforestry.org)

## Forestry Fall Webinar Series Continues

### Shiitake Mushroom Production; November 22

Description: If you have lots of hardwood timber on your land and want to try something a little different to bring in some “extra” cash, you might want to consider growing shiitake mushrooms on your land. These are a gourmet mushroom that is well into mainstream markets these days, is relatively inexpensive to get into, and can make some of the smaller diameter hardwoods that you might want to remove in timber stand improvement economically profitable. This webinar will walk you through the process of “drilling and filling” hardwood logs to produce these mushrooms. **Hosting County Extension Offices:** Christian, Franklin, Jefferson, Johnson, Lyon, Mason, Trimble



*Shiitake mushrooms*

Photo courtesy: Joseph O'Brien, USDA Forest Service, Bugwood.org



Photo courtesy: Thomas Barnes

*Cottontail rabbit*

### Wildlife Damage: Control and Management; November 29

Description: This training session will focus on what homeowners and landowners can do to alleviate wildlife damage issues around the home and farm. Topics discussed will include what constitutes legal use of wildlife control products and home remedies; management of typical problems including moles, voles, deer, birds on structures and in agricultural crops; and sources of assistance.

**Hosting County Extension Offices:** Bullitt, Christian, Elliott, Franklin, Jefferson, Johnson, Letcher, Lyon, Mason, Mercer, Ohio, Rowan, Trimble

The webinars are free, but please pre-register with the hosting county office. For more information visit [www.ca.uky.edu/forestryextension/fallwebinars.php](http://www.ca.uky.edu/forestryextension/fallwebinars.php)

## UK Forestry Extension Blogs

Check out the blogs from UK Forestry Extension. For the opinions and analysis of issues important to forestry and woodland owners in Kentucky as well as information about native plants and wildlife visit <http://kentuckynativeplantandwildlife.blogspot.com> and <http://ukforestryextension.blogspot.com> (or find them at [www.ukforestry.org](http://www.ukforestry.org) to access them).



## Upcoming Dates To Remember:

Date:	Event:	Location:	Contact:
November 22, 2011	Fall Webinar Series: Shiitake Mushrooms	See above for Extension Offices	859.257.7597
November 29, 2011	Fall Webinar Series: Wildlife Damage	See above for Extension Offices	859.257.7597
December 1, 2011	Kentucky Farm Bureau Forestry Conference	Galt House in Louisville	502.495.5000

For more information about these programs, visit [www.ukforestry.org](http://www.ukforestry.org)

# NEWS TO USE

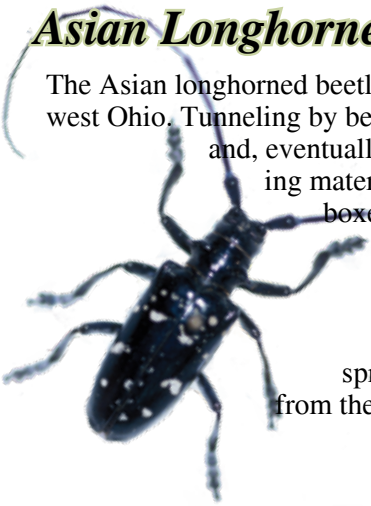
## Forestry License Plate

A special license plate is now available promoting forestry in Kentucky. The plate has already been approved by the state and the Kentucky Forest Industries Association (KFIA) is in the process of collecting the 900 forms required for the plate to be made. The plate will promote forestry while raising funds for Log a Load for Kids and the William H. Steele Scholarship Fund which supports a forestry undergraduate student. Once 900 applications are received KFIA will submit them for production and a card will be issued telling the applicant the plate is available at the local county clerk office. To apply for a plate simply call 502.695.3979 or visit [www.kfia.org](http://www.kfia.org)



## Asian Longhorned Beetle Found in Ohio

The Asian longhorned beetle (ALB) has been attacking trees in the United States and was recently discovered in southwest Ohio. Tunneling by beetle larvae girdles tree stems and branches. Repeated attacks lead to dieback of the tree crown and, eventually, death of the tree. ALB probably travelled to the United States inside solid wood packing material from China. In the United States the beetle prefers maple species (*Acer spp.*), including boxelder, Norway, red, silver, and sugar maples. Other preferred hosts are birches, Ohio buckeye, elms, horsechestnut, and willows. Occasional to rare hosts include ashes, European mountain ash, London planetree, mimosa, and poplars. A complete list of host trees in the United States has not been determined. Currently, the only effective means to eliminate ALB is to remove infested trees and destroy them by chipping or burning. To prevent further spread of the insect, quarantines are established to avoid transporting infested trees and branches from the area. For more information about Asian longhorned beetle visit [www.na.fs.fed.us/fhp/alb/](http://www.na.fs.fed.us/fhp/alb/)



## Fall Forest Fire Hazard Season

The fall forest fire hazard season in Kentucky officially started on October 1 and extends to December 15. As of October 4, 2011, 670 wildfires have burned more than 14,400 acres Kentucky. Most of these fires were due to arson, in fact, over 60 percent of wildfires in Kentucky in the last five years have been intentionally set. Citizens who have information or witnessed suspected arson activity are asked to call the nearest Kentucky Division of Forestry office, State Police post or the Target Arson Hotline at 1-800-27-ARSON.



## Test Your Knowledge Answers from KWM Vol. 6 Issue 1

1. b) Congratulations to R. Casner of Woodford Co. He was randomly chosen from the entries with the correct responses from the last quiz.
2. d)
3. c) Thank you Kentucky Woodland Owners Association for donating
4. b) \$50 gift certificates for Test Your Knowledge for the 2011 issues!
5. a)

Visit [www.ukforestry.org](http://www.ukforestry.org) to submit your answers to this issues' quiz for a chance to win a \$50 gift certificate to Forestry Suppliers. The answers to this issue's questions will be provided in the next issue of the magazine.