

# Test Your Knowledge



Submit your answers at [www.ukforestry.org](http://www.ukforestry.org) for a chance to Win a \$50 Gift Certificate compliments of...



*Editor's note: Questions are drawn from the articles in this issue; if you have trouble with any of the answers then please review the articles to discover them. Visit [www.ukforestry.org](http://www.ukforestry.org) to enter your answers for a chance to win a \$50 gift certificate to Forestry Suppliers. Sorry, but University of Kentucky and Kentucky Division of Forestry employees (and their family members) are ineligible to win the \$50 gift certificate.*



*Hint: See article on page 1.*

1. What is the difference between “prescribed fire” and “controlled fire”?
- a) There is no difference
  - b) Controlled fire is for woodlands only
  - c) Prescribed fire is for grasslands only

2. As woodland owners work with the Kentucky Department of Fish and Wildlife Resources to implement prescribed fire, who is responsible for installing the fire control lines?



*Hint: See article on page 4.*

- a) Private lands biologist
- b) Landowner
- c) Local fire department

3. If you have an established wild pig population on your property what is the most effective method for controlling them?



*Hint: See article on page 8.*

- a) Hunting
- b) Poisoning
- c) Trapping



*Hint: See article on page 15.*

4. Honey bees provide many benefits to people. Overall, which benefit do you believe is most important?

- a) Honey
- b) Beeswax
- c) Plant pollination



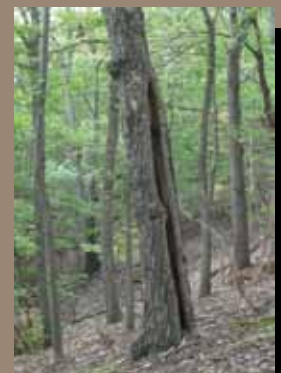
*Hint: See article on page 20.*

5. Japanese honeysuckle is a serious threat to natural areas. This exotic, invasive plant is capable of vigorous growth and can physically crowd out native plants. It can also use another strategy to inhibit native plant growth through a process known as \_\_\_\_\_?

- a) Inhibition
- b) Alleopathy
- c) Chemitrogy

6. We all recognize that wildfires are a serious threat that degrades timber values. The majority of this loss is attributed to \_\_\_\_\_.

- a) Hear rot of damaged trees
- b) Change in stand structure
- c) Cull loss



*Hint: See article on page 6.*



Scan this code with your smartphone or tablet device to submit your answers.